

SQGNE Test Tool Bake-off Checkpoint Technologies and HP

Overview

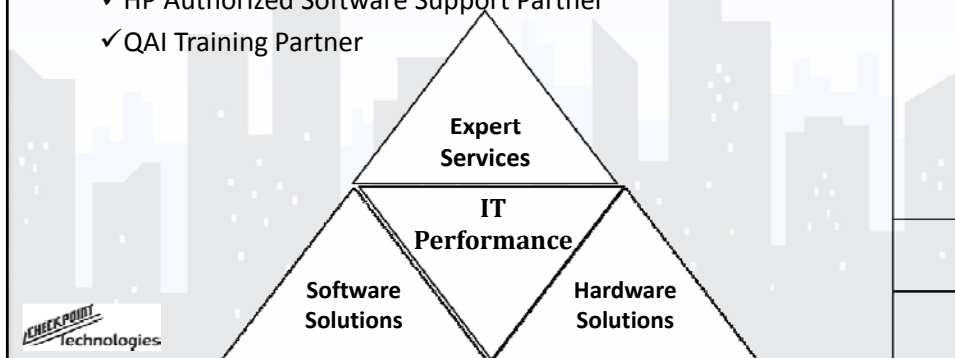
- HP Quality Center
- HP Application Lifecycle Management
- HP Functional Testing

Bob Crews – President
June 13, 2012



About Checkpoint Technologies....

- ✓ Incorporated in January, 2003
- ✓ HP Software Specialist Partner & Authorized Training Partner
- ✓ HP Server, Storage & Networking Partner
- ✓ Riverbed, F5, and VMWare Partners
- ✓ HP Authorized Software Support Partner
- ✓ QAI Training Partner



HP Quality Center

The Core Functionality

Speaker Name – Title
Date



HP Quality Center core

Deliver optimal business results through high-quality applications

Single, scalable platform that enables a consistent, repeatable process for:

- Requirement management
- Test planning, scheduling & execution
- Release & cycle management
- Defect management
- Real time reporting of progress and status
- Integration with Developer Environments

Facilitates distributed collaboration and communication between QA teams, developers and business analysts on a single platform

Allows organizations to lower costs by capturing critical defects before they reach production

Enables organizations to manage release process and make informed go/no go decisions through real time reports

Supporting key stakeholders from across IT & the business



Business Analysts



QA Teams



Development Teams

Requirements Management

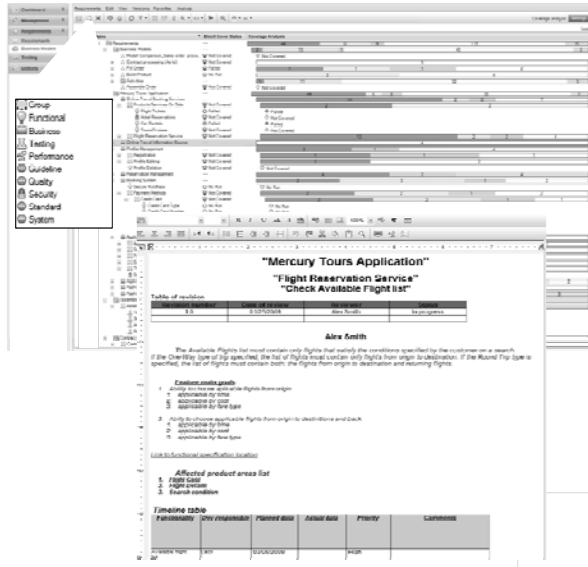
Integrated solution for defining, managing and tracking requirements

Key Benefits

- Business analyst can collaborate on application requirements without fear of overriding other's work
- Assess overall risk to the business through real-time visibility of test coverage and associated defects against business needs
- Assess the impact of change before changing requirements
- Easy adoption by Business Analysts

Key Capabilities

- Define and track multiple requirement types
- Establish templates to ensure higher quality requirements
- Manage requirements dependencies
- Bi-directional traceability from requirements to requirements, tests and defects
- Manage change requests through formal approval process
- Familiar rich test editor interface
- Version Control and Baselining
- Leverage existing assets in MS Word



Version Control

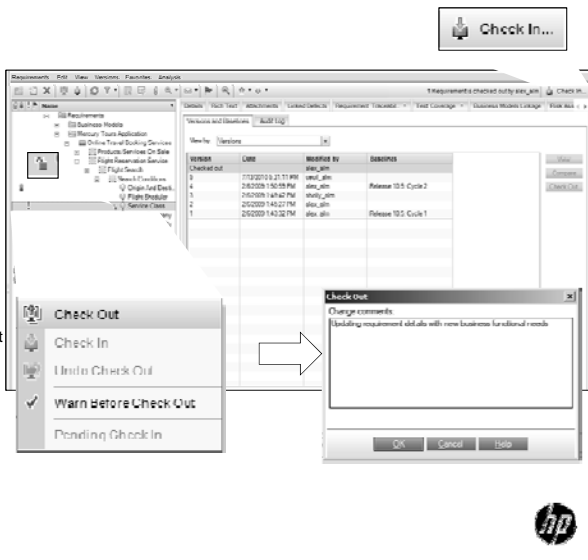
Create and manage entities while maintaining previous versions

Key Benefits

- Allows distributed teams to collaborate on the joint development of requirements and tests without over-riding other's changes.
- Track the "story" of how requirements and tests were developed
- Protect data through roll back of versioned requirements

Key Capabilities

- Identify, track and roll back changes that were made to requirements, tests, and test resources.
- Version control is integrated and enabled for requirements, tests and test resources
- "Check out" an asset to make changes, "Check in" an asset when changes are complete



Baselining

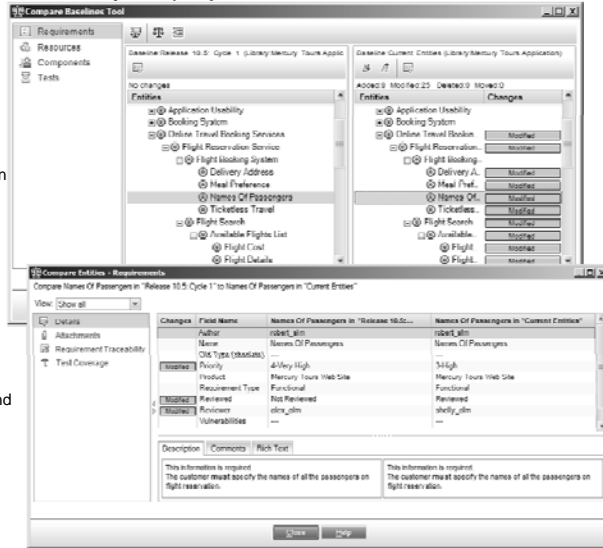
Track changes made to entities in your project over time

Key Benefits

- Compare releases and cycles
- A snapshot of the project state at a particular point in time
- Enable rollback of assets to key points in the application lifecycle
- Compare baselines to assess changes
- Ability to use baselines in test execution

Key Capabilities

- Create baselines – including traceability between assets
- Compare baselines both at high level and drill down to specific changes including traceability
- Report and print baselines for sign-off
- Control who can create and modify baselines



7

Risk-based Quality Management

Help overcome the question of “what to test?”

Key Benefits

- Objectively assess and prioritize the highest-risk, highest-priority requirements
- Manage strategies and processes based on business risk
- Fine-tune your testing effort based on quantifiable business risk
- Provides guidance on where to allocate testing resources.

Key Capabilities

- Assess requirements risk
- Auto calculate testing effort
- Assessments made by calculations based on:
 - Business Criticality
 - Failure Probability
 - Functionality Complexity



8

Release & Cycle Management

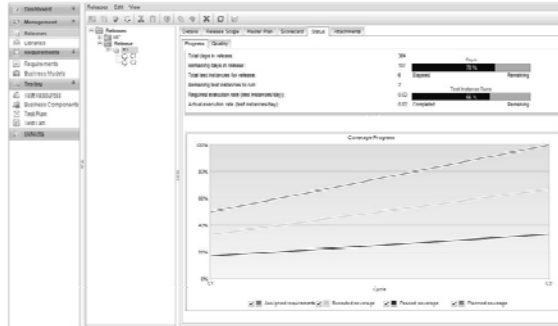
Track and measure the progress and quality of releases and cycles

Key Benefits

- Manage projects and assets against release and cycles
- Track release progress
- Gain visibility into release readiness and release quality
- Compare releases and cycles for continuous process improvement

Key Capabilities

- Manage requirements & tests according to application releases and dev/QA cycles
- Compare planned vs. actual progress for each application release and cycle
- Assess release quality across multiple cycles



9



Test Plan

Define, manage and track all test scripts

Key Benefits

- Create test cases to adequately test the requirements
- Manage all test types (Functional, Performance, Security) in one place
- Ensure requirements coverage through traceability to requirements
- Manage change associated with requirements changes

Key Capabilities

- Design, build and manage manual and automated test cases
- Link test cases to requirements
- Leverage test cases from MS Word and MS Excel
- Version Control and Baselineing

| Step Name | Description | Expected Result |
|-----------------------------|---|--|
| Step 1: Valid | 1. Complete the Credit Card number field as follows: o Number should contain exactly 16 digits o No letters (spaces) or special characters should be used o Not all digits should be 0 (zeros) 2. Click the Secure Purchase button. 3. Check the results on the next page. | The library should be located in the right left-hand pane area. The library properties should be correct. |
| Step 2: Zero | 1. Type 16 digits in the Credit Card Number field. All digits must be 0 (zeros). 2. Click the Secure Purchase button. 3. Check the results on the next page. | The library should not be located. An error message should appear indicating that you must enter valid Credit Card Number. |
| Step 3: Less Than 16 Digits | 1. Type 15 digits in the Credit Card Number field. 2. Click the Secure Purchase button. 3. Check the results on the next page. | The library should not be located. An error message should appear indicating that you must enter valid Credit Card Number. |
| Step 4: Empty | 1. Click the Secure Purchase button. 2. Click the Credit Card Number field. 3. Check the results on the next page. | The library should not be located. An error message should appear indicating that you must enter valid Credit Card Number. |
| Step 5: Spaces | 1. Type spaces only in the Credit Card Number field. 2. Click the Secure Purchase button. 3. Check the results on the next page. | The library should not be located. An error message should appear indicating that you must enter valid Credit Card Number. |
| Step 6: Letters | 1. Type letters in the credit card number field. 2. Click the Secure Purchase button. 3. Check the results on the next page. | The library should not be located. An error message should appear indicating that you must enter valid Credit Card Number. |
| Step 7: Special Characters | 1. Type special characters in the Credit Card Number field. 2. Click the Secure Purchase button. 3. Check the results on the next page. Note: Special characters are non-alphanumeric characters, such as [!@#\$%^&*()_+{} ;':",./~`-+=<>?]. | The library should not be located. An error message should appear indicating that you must enter valid Credit Card Number. |

10



Test Scheduling and Execution

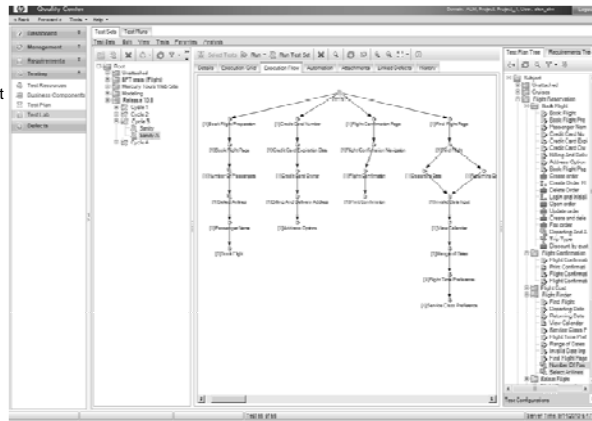
Test Lab

Key Benefits

- Manage and control execution of manual and automated tests
- Schedule the execution of automated test scripts for unattended execution
- Execute manual tests via HP Sprinter
- View and assess test execution runs and results including logging defects with run details

Key Capabilities

- Create 'test sets' or groups of tests to be executed together
- Create 'test sets' based on releases and cycles
- Define dependencies and design test execution flows
- Assign to QA testers
- Assign to execution host



HP Sprinter

The next generation of manual testing

Key Benefits

- Accelerate manual testing
- Improved testing accuracy
- Better communication of defects to development (accelerated defect remediation)
- Unobtrusive, easy to use user interface
- Supports exploratory testing
- Reduce time and resources by testing multiple environments at once

Key Capabilities

- Toolkit – Screen capture and annotations, measure objects position etc.
- Record user actions to support exploratory testing
- Automatic data injection
- Mirror testing
- Log defects with associated information directly into HP Quality Center/ALM



Defect Management

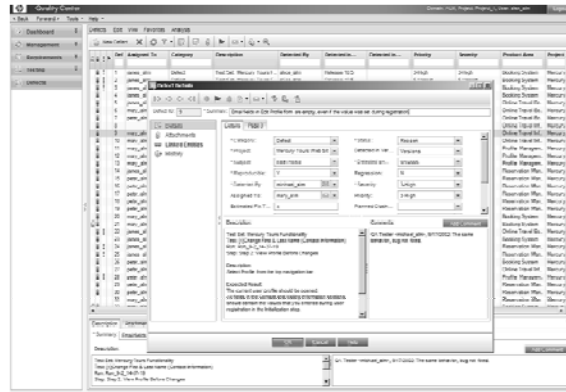
Track defects across the entire application lifecycle

Key Benefits

- Manage, track and enforce defects across the application lifecycle
- Create defects from manually or directly from the execution of manual and automated tests
- Clearly communicate bugs to developers with context from requirements and tests
- Integrated into developers IDE

Key Capabilities

- Enforce defect lifecycle process through custom fields and workflow
- Log defects directly from test runs with test details (test step, result, screenshots, attachments) to ensure the developers can reproduce the issue
- Traceability to requirements, tests and other defects
- Alert key stakeholders through automated emails



13

HP Functional Testing

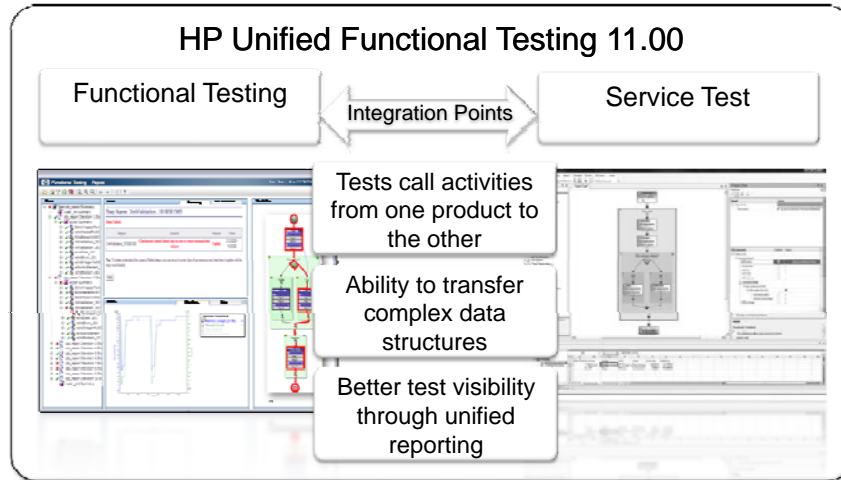
Overview



14

Automated Functional Testing for Modern Apps

Simplify & unify testing from user interface to back-end services
Achieve agility & scale through integrated test automation

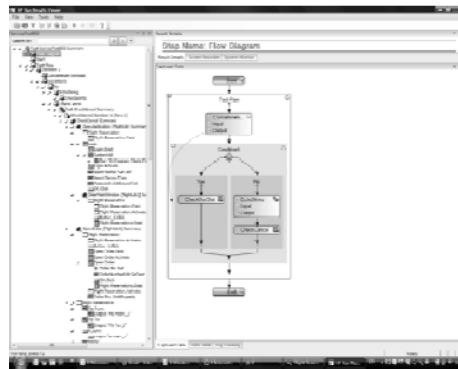


15

HP Unified Functional Testing 11.00

Automate the validation challenge of modern applications

- **The industry's first single test automation platform** for all application & service types
- Simplified, repeatable test design & maintenance for GUI & non-GUI components
 - Keyword & visual drag and drop
- Validate & report on an integrated test scenario
 - Combine test data from Functional Testing & Service Test
- Full traceability for easier debugging
- Integration with HP ALM 11.00 & HP Quality Center



16



HP QuickTest Professional 11.00

Raise the quality bar for modern, web applications

- Ready to automate testing of Web 2.0 and RIA
 - AJAX, RIA, Silverlight, more
- Data awareness for simple preparation of test data
- Simplified test design & maintenance for GUI
 - Keyword and visual drag and drop
- Predictability with advanced reporting & integration with HP ALM 11.00 and HP QC 11.00
- Full traceability for easier debugging



17

Contact Information

Mike Lasiewski
Northeast Account Representative
Email: mlasiewski@checkpointtech.com
Phone: (617) 272-5687



Bob Crews
President
Email: bcrews@checkpointtech.com
Phone: (813) 818-8324

18